
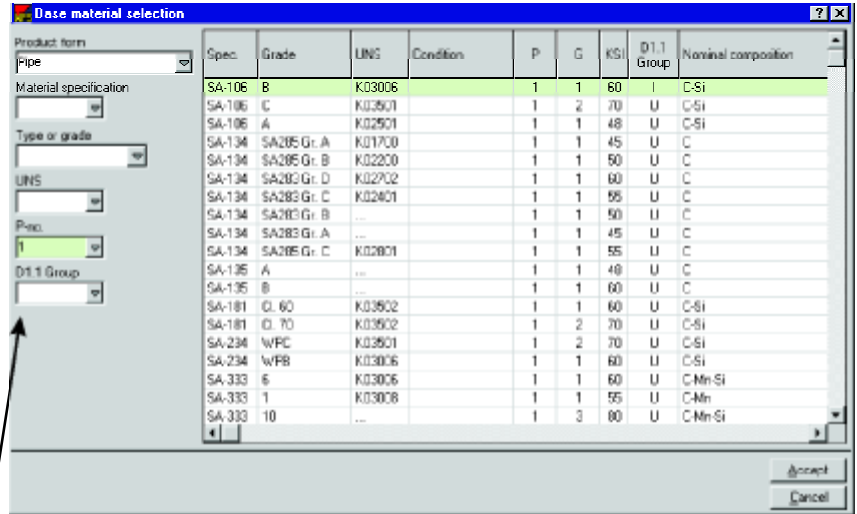


# Material Databases

## Using the databases of Base Metals, Filler Metals, and Pipe Schedules

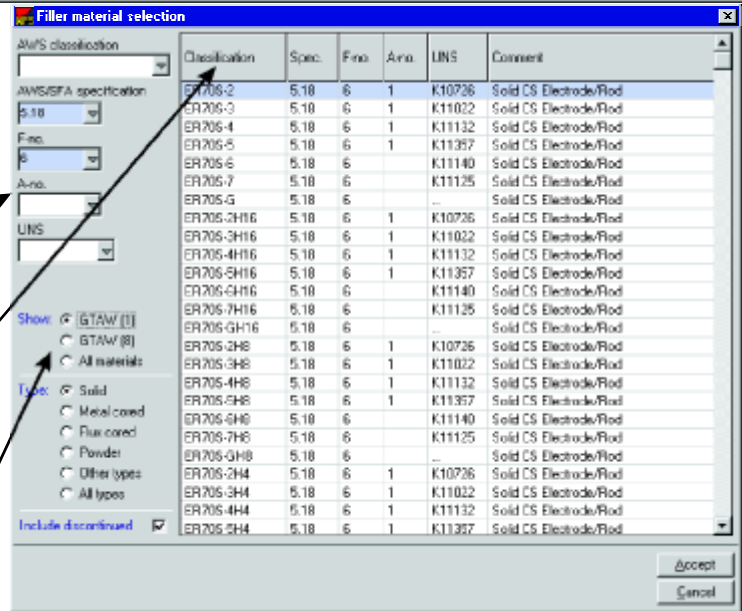
1 Access to the materials databases can be done by clicking on the database icon  in one of the following fields on any form in WeldOffice® WPS or WPQ Module:

- Base metal specification (Base material database)
- Base metal P-no. (Base material database)
- Base metal G-no. (Base material database)
- Filler metal specification (Filler material database)
- Filler metal classification (Filler material database)
- Filler metal F-number (Filler material database)
- Filler metal A-number (Filler material database)
- Base metal Size (Pipe schedule log)
- Base metal Sch. (Pipe schedule log)
- Base metal Thick. (Pipe schedule log)
- Base metal Dia. (Pipe schedule log)



2 The filler and base metal databases contain over 2000 ASME and AWS materials each. To easily locate the desired material, use one of the following Sorting/Filtering methods:

- A Several fields are provided on the left side of these databases to allow filtering of the data. From one or more of these fields, select known variables (such as P# or SFA). This will narrow the database down allowing easier location of the desired materials.
- B Clicking on the header of any column will sort the materials alphabetically by that column. Use this feature to quickly scroll through all displayed materials.



3 The Filler material database offers even more filtering capabilities. Based on the base materials and process specified on the record (P1 and P8 with GTAW in this example) the database has offered two additional filtering buttons. The first one allows filtering the database to show only those filler metals possible to weld with GTAW and P1 while the second button shows only those filler metals possible to weld with GTAW and P8.

4 The **Pipe schedule log** offers an easy to read matrix for finding the desired pipe size and schedule. Locate the diameter in the left hand column and then move to the right to find the proper schedule. The **Pipe schedule log** also offers three different tables for Carbon steel, Stainless steel, and Tube gauge/thickness.

5 When the desired material has been located in any one of these databases, click on the material to select it and then press the **Accept** button in the lower right corner. This will input all associated data in the appropriate fields on the record.